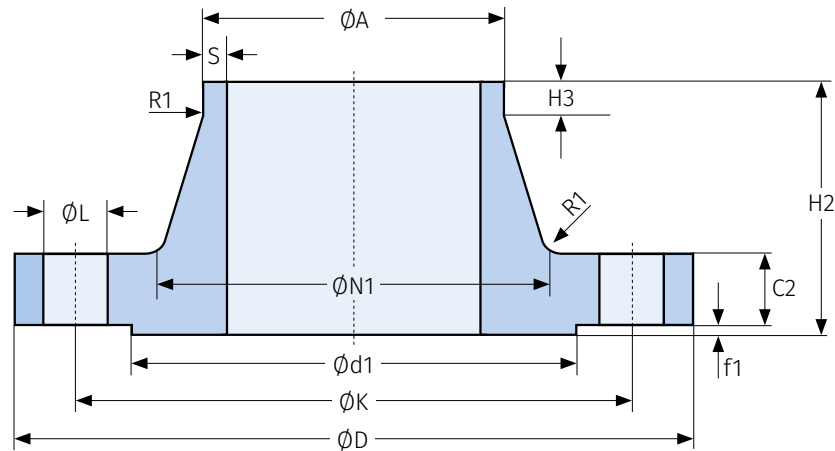


## WELD-NECK FLANGE

**VORSCHWEISSFLANSCH  
TYP 11 PN 2,5**

nach EN 1092-1


**TYP 11 PN 2,5**

Maße für DN &lt; 900 siehe PN 6 / Dimensions for DN &lt; 900 see PN 6

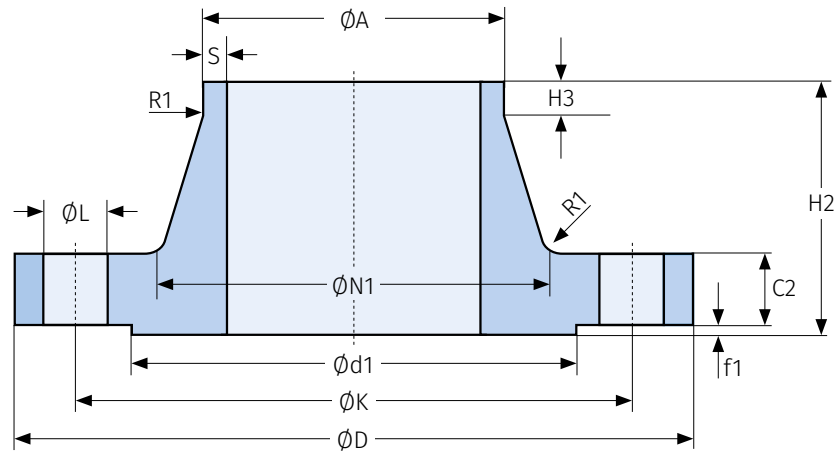
| DN   | A    | S   | D    | K    | d1   | N1   | C2  | H2  | H3 | R1 | f1 | L  | n  | M   | kg   |
|------|------|-----|------|------|------|------|-----|-----|----|----|----|----|----|-----|------|
| 900  | 914  | 7,1 | 1075 | 1020 | 980  | 942  | 30  | 74  | 16 | 12 | 5  | 30 | 24 | M27 | 75,5 |
| 1000 | 1016 | 7,1 | 1175 | 1120 | 1080 | 1045 | 30  | 74  | 16 | 16 | 5  | 30 | 28 | M27 | 85,6 |
| 1200 | 1219 | 8,0 | 1375 | 1320 | 1280 | 1245 | 32  | 94  | 16 | 16 | 5  | 30 | 32 | M27 | 104  |
| 1400 | 1422 | 8,0 | 1575 | 1520 | 1480 | 1445 | 38  | 96  | 16 | 16 | 5  | 30 | 36 | M27 | 133  |
| 1600 | 1626 | 8,8 | 1790 | 1730 | 1690 | 1645 | 46  | 102 | 20 | 16 | 5  | 30 | 40 | M27 | 188  |
| 1800 | 1829 | 10  | 1990 | 1930 | 1890 | 1845 | 46  | 110 | 20 | 16 | 5  | 30 | 44 | M27 | 215  |
| 2000 | 2032 | 11  | 2190 | 2130 | 2090 | 2045 | 50  | 122 | 22 | 16 | 5  | 30 | 48 | M27 | 260  |
| 2200 | 2235 | 11  | 2405 | 2340 | 2295 | 2248 | 56  | 129 | 25 | 18 | 5  | 33 | 52 | M30 | 332  |
| 2400 | 2438 | 11  | 2605 | 2540 | 2495 | 2448 | 62  | 143 | 25 | 18 | 5  | 33 | 56 | M30 | 392  |
| 2600 | 2620 | 11  | 2805 | 2740 | 2695 | 2648 | 64  | 148 | 25 | 18 | 5  | 33 | 60 | M30 | 497  |
| 2800 | 2820 | 11  | 3030 | 2960 | 2910 | 2848 | 74  | 161 | 25 | 18 | 5  | 36 | 64 | M33 | 668  |
| 3000 | 3020 | 11  | 3230 | 3160 | 3110 | 3050 | 80  | 170 | 25 | 18 | 5  | 36 | 68 | M33 | 772  |
| 3200 | 3220 | 11  | 3430 | 3360 | 3310 | 3250 | 84  | 180 | 25 | 20 | 5  | 36 | 72 | M33 | 869  |
| 3400 | 3420 | 11  | 3630 | 3560 | 3510 | 3450 | 90  | 194 | 28 | 20 | 5  | 36 | 76 | M33 | 988  |
| 3600 | 3620 | 11  | 3840 | 3770 | 3720 | 3652 | 96  | 201 | 28 | 20 | 5  | 36 | 80 | M33 | 1156 |
| 3800 | 3820 | 11  | 4045 | 3970 | 3920 | 3852 | 102 | 212 | 28 | 20 | 5  | 39 | 80 | M36 | 1309 |
| 4000 | 4020 | 11  | 4245 | 4170 | 4120 | 4052 | 106 | 226 | 28 | 20 | 5  | 39 | 84 | M36 | 1441 |

TYP 11 PN 2,5

## WELD-NECK FLANGE

**VORSCHWEISSFLANSCH  
TYP 11 PN 6**

nach EN 1092-1


**TYP 11 PN 6**

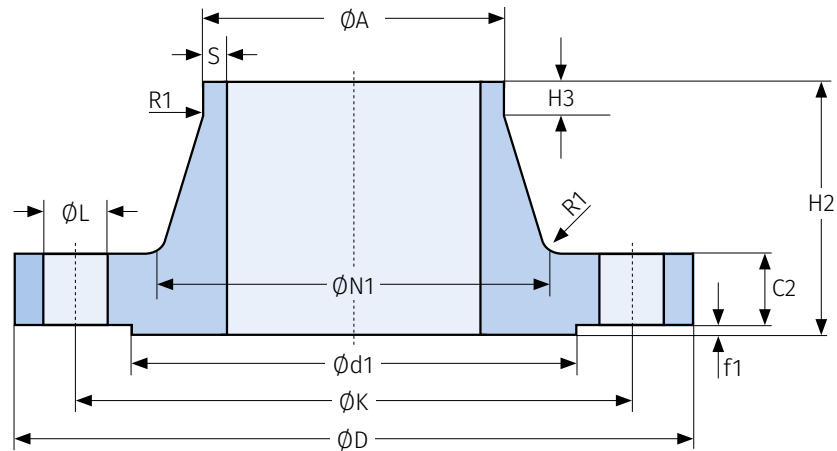
| DN   | A      | S    | D    | K    | d1   | N1   | C2  | H2  | H3 | R1 | f1 | L  | n  | M   | kg    |
|------|--------|------|------|------|------|------|-----|-----|----|----|----|----|----|-----|-------|
| 10   | 17,2   | 2,0  | 75   | 50   | 35   | 26   | 12  | 28  | 6  | 4  | 2  | 11 | 4  | M10 | 0,353 |
| 15   | 21,3   | 2,0  | 80   | 55   | 40   | 30   | 12  | 30  | 6  | 4  | 2  | 11 | 4  | M10 | 0,408 |
| 20   | 26,9   | 2,3  | 90   | 65   | 50   | 38   | 14  | 32  | 6  | 4  | 2  | 11 | 4  | M10 | 0,621 |
| 25   | 33,7   | 2,6  | 100  | 75   | 60   | 42   | 14  | 35  | 6  | 4  | 2  | 11 | 4  | M10 | 0,762 |
| 32   | 42,4   | 2,6  | 120  | 90   | 70   | 55   | 14  | 35  | 6  | 6  | 2  | 14 | 4  | M12 | 1,11  |
| 40   | 48,3   | 2,6  | 130  | 100  | 80   | 62   | 14  | 38  | 7  | 6  | 3  | 14 | 4  | M12 | 1,26  |
| 50   | 60,3   | 2,9  | 140  | 110  | 90   | 74   | 14  | 38  | 8  | 6  | 3  | 14 | 4  | M12 | 1,43  |
| 65   | 76,1   | 2,9  | 160  | 130  | 110  | 88   | 14  | 38  | 9  | 6  | 3  | 14 | 4  | M12 | 1,77  |
| 80   | 88,9   | 3,2  | 190  | 150  | 128  | 102  | 16  | 42  | 10 | 8  | 3  | 18 | 4  | M16 | 2,88  |
| 100  | 114,3  | 3,6  | 210  | 170  | 148  | 130  | 16  | 45  | 10 | 8  | 3  | 18 | 4  | M16 | 3,41  |
| 125  | 139,7  | 4,0  | 240  | 200  | 178  | 155  | 18  | 48  | 10 | 8  | 3  | 18 | 8  | M16 | 4,65  |
| 150  | 168,3  | 4,5  | 265  | 225  | 202  | 184  | 18  | 48  | 12 | 10 | 3  | 18 | 8  | M16 | 5,50  |
| 200  | 219,1  | 6,3  | 320  | 280  | 258  | 236  | 20  | 55  | 15 | 10 | 3  | 18 | 8  | M16 | 8,60  |
| 250  | 273,0  | 6,3  | 375  | 335  | 312  | 290  | 22  | 60  | 15 | 12 | 3  | 18 | 12 | M16 | 11,7  |
| 300  | 323,9  | 7,1  | 440  | 395  | 365  | 342  | 22  | 62  | 15 | 12 | 4  | 22 | 12 | M20 | 15,3  |
| 350  | 355,6  | 7,1  | 490  | 445  | 415  | 385  | 22  | 62  | 15 | 12 | 4  | 22 | 12 | M20 | 20,3  |
| 400  | 406,4  | 7,1  | 540  | 495  | 465  | 438  | 22  | 65  | 15 | 12 | 4  | 22 | 16 | M20 | 23,1  |
| 450  | 457,0  | 7,1  | 595  | 550  | 520  | 492  | 22  | 65  | 15 | 12 | 4  | 22 | 16 | M20 | 27,0  |
| 500  | 508,0  | 7,1  | 645  | 600  | 570  | 538  | 24  | 68  | 15 | 12 | 4  | 22 | 20 | M20 | 30,8  |
| 600  | 610,0  | 7,1  | 755  | 705  | 670  | 640  | 30  | 70  | 16 | 12 | 5  | 26 | 20 | M24 | 44,0  |
| 700  | 711,0  | 8,0  | 860  | 810  | 775  | 740  | 30  | 76  | 16 | 12 | 5  | 26 | 24 | M24 | 53,7  |
| 800  | 813,0  | 8,0  | 975  | 920  | 880  | 842  | 30  | 76  | 16 | 12 | 5  | 30 | 24 | M27 | 64,4  |
| 900  | 914,0  | 8,0  | 1075 | 1020 | 980  | 942  | 34  | 78  | 16 | 12 | 5  | 30 | 24 | M27 | 79,2  |
| 1000 | 1016,0 | 8,0  | 1175 | 1120 | 1080 | 1045 | 38  | 82  | 16 | 16 | 5  | 30 | 28 | M27 | 98,6  |
| 1200 | 1219,0 | 8,8  | 1405 | 1340 | 1295 | 1248 | 42  | 104 | 20 | 16 | 5  | 33 | 32 | M30 | 152   |
| 1400 | 1422,0 | 8,8  | 1630 | 1560 | 1510 | 1452 | 56  | 114 | 20 | 16 | 5  | 36 | 36 | M33 | 246   |
| 1600 | 1626,0 | 10,0 | 1830 | 1760 | 1710 | 1655 | 63  | 119 | 20 | 16 | 5  | 36 | 40 | M33 | 309   |
| 1800 | 1829,0 | 11,0 | 2045 | 1970 | 1920 | 1855 | 69  | 133 | 20 | 16 | 5  | 39 | 44 | M36 | 400   |
| 2000 | 2032,0 | 12,5 | 2265 | 2180 | 2125 | 2058 | 74  | 146 | 25 | 16 | 5  | 42 | 48 | M39 | 516   |
| 2200 | 2235,0 | 14,0 | 2475 | 2390 | 2335 | 2260 | 81  | 154 | 25 | 18 | 5  | 42 | 52 | M39 | 645   |
| 2400 | 2438,0 | 15,0 | 2685 | 2600 | 2545 | 2462 | 87  | 168 | 25 | 18 | 5  | 42 | 56 | M39 | 786   |
| 2600 | 2620,0 | 16,0 | 2905 | 2810 | 2750 | 2665 | 91  | 175 | 25 | 18 | 5  | 48 | 60 | M45 | 1021  |
| 2800 | 2820,0 | 17,0 | 3115 | 3020 | 2960 | 2865 | 101 | 188 | 30 | 18 | 5  | 48 | 64 | M45 | 1256  |
| 3000 | 3020,0 | 20,0 | 3315 | 3220 | 3160 | 3068 | 102 | 192 | 30 | 18 | 5  | 48 | 68 | M45 | 1404  |
| 3200 | 3220,0 | 20,0 | 3525 | 3430 | 3370 | 3272 | 106 | 202 | 30 | 20 | 5  | 48 | 72 | M45 | 1617  |
| 3400 | 3420,0 | 22,0 | 3735 | 3640 | 3580 | 3475 | 110 | 214 | 35 | 20 | 5  | 48 | 76 | M45 | 1877  |
| 3600 | 3630,0 | 22,0 | 3970 | 3860 | 3790 | 3678 | 124 | 229 | 35 | 20 | 5  | 56 | 80 | M52 | 2366  |

 Maße / dimensions in mm  
 n = Anzahl Schraubenlöcher / number of bolts holes  
 M = Schraubengröße / size of bolts

WELD-NECK FLANGE

# VORSCHWEISSFLANSCH TYP 11 PN 10

nach EN 1092-1



## TYP 11 PN 10

Maße für DN < 50 siehe PN 40 / Dimensions for DN < 50 see PN 40  
Maße für DN 50 - 200 siehe PN 16 / Dimensions for DN 50 - 200 see PN 16

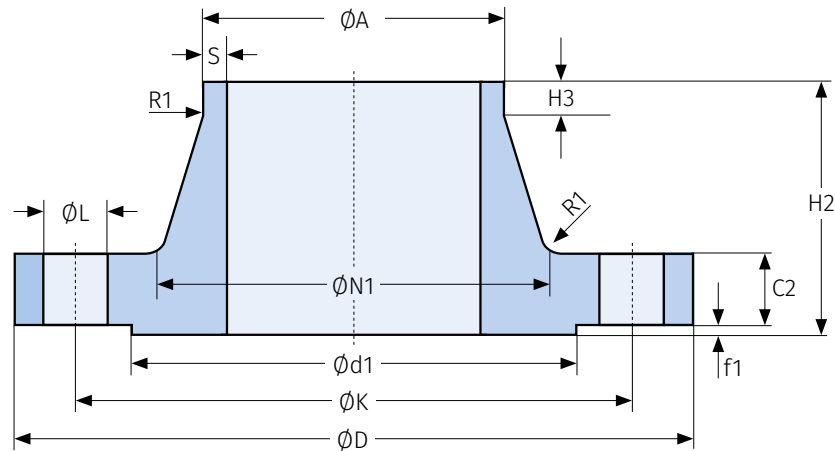
| DN   | A      | S    | D    | K    | d1   | N1   | C2  | H2  | H3 | R1 | f1 | L  | n  | M   | kg   |
|------|--------|------|------|------|------|------|-----|-----|----|----|----|----|----|-----|------|
| 200  | 219,1  | 6,3  | 340  | 295  | 268  | 234  | 24  | 62  | 16 | 10 | 3  | 22 | 8  | M20 | 11,6 |
| 250  | 273,0  | 6,3  | 395  | 350  | 320  | 292  | 26  | 68  | 16 | 12 | 3  | 22 | 12 | M20 | 15,8 |
| 300  | 323,9  | 7,1  | 445  | 400  | 370  | 342  | 26  | 68  | 16 | 12 | 4  | 22 | 12 | M20 | 18,3 |
| 350  | 355,6  | 7,1  | 505  | 460  | 430  | 385  | 26  | 68  | 16 | 12 | 4  | 22 | 16 | M20 | 25,3 |
| 400  | 406,4  | 7,1  | 565  | 515  | 482  | 440  | 26  | 72  | 16 | 12 | 4  | 26 | 16 | M24 | 30,6 |
| 450  | 457,0  | 7,1  | 615  | 565  | 532  | 488  | 28  | 72  | 16 | 12 | 4  | 26 | 20 | M24 | 35,1 |
| 500  | 508,0  | 7,1  | 670  | 620  | 585  | 542  | 28  | 75  | 16 | 12 | 4  | 26 | 20 | M24 | 40,5 |
| 600  | 610,0  | 8,0  | 780  | 725  | 685  | 642  | 30  | 82  | 18 | 12 | 5  | 30 | 20 | M27 | 52,9 |
| 700  | 711,0  | 8,8  | 895  | 840  | 800  | 746  | 35  | 85  | 18 | 12 | 5  | 30 | 24 | M27 | 75,8 |
| 800  | 813,0  | 8,8  | 1015 | 950  | 905  | 850  | 38  | 96  | 18 | 12 | 5  | 33 | 24 | M30 | 102  |
| 900  | 914,0  | 12,5 | 1115 | 1050 | 1005 | 950  | 38  | 99  | 20 | 12 | 5  | 33 | 28 | M30 | 121  |
| 1000 | 1016,0 | 12,5 | 1230 | 1160 | 1110 | 1052 | 44  | 105 | 20 | 16 | 5  | 36 | 28 | M33 | 161  |
| 1200 | 1219,0 | 12,5 | 1455 | 1380 | 1330 | 1256 | 55  | 132 | 25 | 16 | 5  | 39 | 32 | M36 | 258  |
| 1400 | 1422,0 | 14,2 | 1675 | 1590 | 1535 | 1460 | 65  | 143 | 25 | 16 | 5  | 42 | 36 | M39 | 371  |
| 1600 | 1626,0 | 16,0 | 1915 | 1820 | 1760 | 1666 | 75  | 159 | 25 | 16 | 5  | 48 | 40 | M45 | 547  |
| 1800 | 1829,0 | 17,5 | 2115 | 2020 | 1960 | 1868 | 85  | 175 | 30 | 16 | 5  | 48 | 44 | M45 | 691  |
| 2000 | 2032,0 | 17,5 | 2325 | 2230 | 2170 | 2072 | 90  | 186 | 30 | 16 | 5  | 48 | 48 | M45 | 830  |
| 2200 | 2235,0 | 20,0 | 2550 | 2440 | 2370 | 2275 | 100 | 202 | 35 | 18 | 5  | 56 | 52 | M52 | 1073 |
| 2400 | 2438,0 | 22,2 | 2760 | 2650 | 2570 | 2478 | 110 | 218 | 35 | 18 | 5  | 56 | 56 | M52 | 1329 |
| 2600 | 2620,0 | 25,0 | 2960 | 2850 | 2780 | 2680 | 110 | 224 | 40 | 18 | 5  | 56 | 60 | M52 | 1574 |
| 2800 | 2820,0 | 25,0 | 3180 | 3070 | 3000 | 2882 | 124 | 244 | 40 | 18 | 5  | 56 | 64 | M52 | 1987 |
| 3000 | 3020,0 | 32,0 | 3405 | 3290 | 3210 | 3085 | 132 | 257 | 45 | 18 | 5  | 62 | 68 | M56 | 2476 |

TYP 11 PN 10

## WELD-NECK FLANGE

**VORSCHWEISSFLANSCH  
 TYP 11 PN 16**

nach EN 1092-1


**TYP 11 PN 16**

Maße für DN &lt; 50 siehe PN 40 / Dimensions for DN &lt; 50 see PN 40

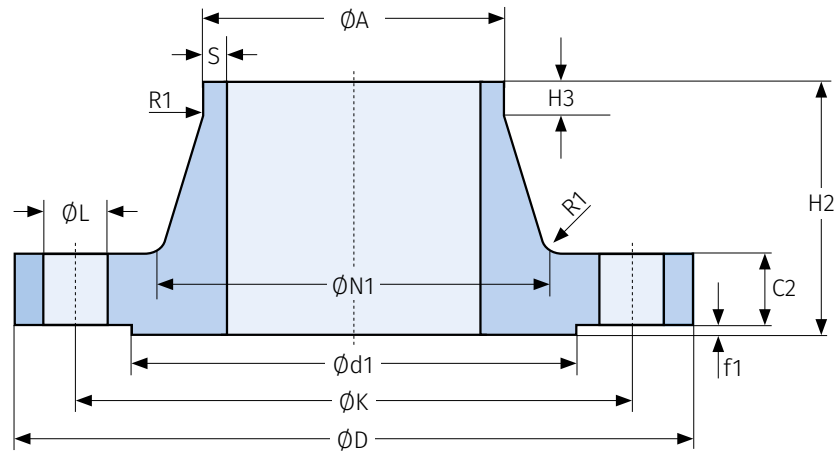
| DN   | A     | S    | D    | K    | d1   | R1 | C2  | H2  | H3 | R1 | f1 | L  | n              | M   | kg   |
|------|-------|------|------|------|------|----|-----|-----|----|----|----|----|----------------|-----|------|
| 50   | 60,3  | 2,9  | 165  | 125  | 102  | 6  | 18  | 45  | 8  | 6  | 3  | 18 | 4              | M16 | 2,53 |
| 65   | 76,1  | 2,9  | 185  | 145  | 122  | 6  | 18  | 45  | 10 | 6  | 3  | 18 | 8 <sup>a</sup> | M16 | 3,03 |
| 80   | 88,9  | 3,2  | 200  | 160  | 138  | 6  | 20  | 50  | 10 | 6  | 3  | 18 | 8              | M16 | 3,92 |
| 100  | 114,3 | 3,6  | 220  | 180  | 158  | 8  | 20  | 52  | 12 | 8  | 3  | 18 | 8              | M16 | 4,62 |
| 125  | 139,7 | 4,0  | 250  | 210  | 188  | 8  | 22  | 55  | 12 | 8  | 3  | 18 | 8              | M16 | 6,30 |
| 150  | 168,3 | 4,5  | 285  | 240  | 212  | 10 | 22  | 55  | 12 | 10 | 3  | 22 | 8              | M20 | 7,81 |
| 200  | 219,1 | 6,3  | 340  | 295  | 268  | 10 | 24  | 62  | 16 | 10 | 3  | 22 | 12             | M20 | 11,5 |
| 250  | 273,0 | 6,3  | 405  | 355  | 320  | 12 | 26  | 70  | 16 | 12 | 3  | 26 | 12             | M24 | 16,7 |
| 300  | 323,9 | 7,1  | 460  | 410  | 378  | 12 | 28  | 78  | 16 | 12 | 4  | 26 | 12             | M24 | 22,1 |
| 350  | 355,6 | 8,0  | 520  | 470  | 438  | 12 | 30  | 82  | 16 | 12 | 4  | 26 | 16             | M24 | 32,8 |
| 400  | 406,4 | 8,0  | 580  | 525  | 490  | 12 | 32  | 85  | 16 | 12 | 4  | 30 | 16             | M27 | 41,1 |
| 450  | 457,0 | 8,8  | 640  | 585  | 550  | 12 | 34  | 83  | 16 | 12 | 4  | 30 | 20             | M27 | 48,5 |
| 500  | 508,0 | 8,8  | 715  | 650  | 610  | 12 | 36  | 84  | 16 | 12 | 4  | 33 | 20             | M30 | 63,4 |
| 600  | 610,0 | 10,0 | 840  | 770  | 725  | 12 | 40  | 88  | 18 | 12 | 5  | 36 | 20             | M33 | 94,0 |
| 700  | 711,0 | 11,0 | 910  | 840  | 795  | 12 | 40  | 104 | 18 | 12 | 5  | 36 | 24             | M33 | 96,5 |
| 800  | 813,0 | 12,5 | 1025 | 950  | 900  | 12 | 41  | 108 | 20 | 12 | 5  | 39 | 24             | M36 | 122  |
| 900  | 914,0 | 12,5 | 1125 | 1050 | 1000 | 12 | 48  | 118 | 20 | 12 | 5  | 39 | 28             | M36 | 155  |
| 1000 | 1016  | 12,5 | 1255 | 1170 | 1115 | 16 | 59  | 137 | 22 | 16 | 5  | 42 | 28             | M39 | 233  |
| 1200 | 1219  | 14,2 | 1485 | 1390 | 1330 | 16 | 78  | 160 | 30 | 16 | 5  | 48 | 32             | M45 | 390  |
| 1400 | 1422  | 16,0 | 1685 | 1590 | 1530 | 16 | 84  | 177 | 30 | 16 | 5  | 48 | 36             | M45 | 495  |
| 1600 | 1626  | 17,5 | 1930 | 1820 | 1750 | 16 | 102 | 204 | 35 | 16 | 5  | 56 | 40             | M52 | 760  |
| 1800 | 1829  | 20,0 | 2130 | 2020 | 1950 | 16 | 110 | 218 | 35 | 16 | 5  | 56 | 44             | M52 | 929  |
| 2000 | 2032  | 22,0 | 2345 | 2230 | 2150 | 16 | 124 | 238 | 40 | 16 | 5  | 62 | 48             | M56 | 1185 |

**TYP 11 PN 16**

## WELD-NECK FLANGE

**VORSCHWEISSFLANSCH  
 TYP 11 PN 25 / PN 40**

nach EN 1092-1


**TYP 11 PN 25**

Maße für DN &lt; 200 siehe PN 40 / Dimensions for DN &lt; 200 see PN 40

| DN   | A      | S    | D    | K    | d1   | N1   | C2 | H2  | H3 | R1 | f1 | L  | n  | M   | kg   |
|------|--------|------|------|------|------|------|----|-----|----|----|----|----|----|-----|------|
| 200  | 219,1  | 6,3  | 360  | 310  | 278  | 244  | 30 | 80  | 16 | 10 | 3  | 26 | 12 | M24 | 17,1 |
| 250  | 273,0  | 7,1  | 425  | 370  | 335  | 298  | 32 | 88  | 18 | 12 | 3  | 30 | 12 | M27 | 24,3 |
| 300  | 323,9  | 8,0  | 485  | 430  | 395  | 352  | 34 | 92  | 18 | 12 | 4  | 30 | 16 | M27 | 31,8 |
| 350  | 355,6  | 8,0  | 555  | 490  | 450  | 398  | 38 | 100 | 20 | 12 | 4  | 33 | 16 | M30 | 48,8 |
| 400  | 406,4  | 8,8  | 620  | 550  | 505  | 452  | 40 | 110 | 20 | 12 | 4  | 36 | 16 | M33 | 63,3 |
| 450  | 457,0  | 8,8  | 670  | 600  | 555  | 500  | 46 | 110 | 20 | 12 | 4  | 36 | 20 | M33 | 76,0 |
| 500  | 508,0  | 10,0 | 730  | 660  | 615  | 558  | 48 | 125 | 20 | 12 | 4  | 36 | 20 | M33 | 97,0 |
| 600  | 610,0  | 12,5 | 845  | 770  | 720  | 660  | 48 | 125 | 20 | 12 | 5  | 39 | 20 | M36 | 121  |
| 700  | 711,0  | 14,2 | 960  | 875  | 820  | 760  | 50 | 129 | 20 | 12 | 5  | 42 | 24 | M39 | 155  |
| 800  | 813,0  | 16,0 | 1085 | 990  | 930  | 864  | 53 | 138 | 22 | 12 | 5  | 48 | 24 | M45 | 205  |
| 900  | 914,0  | 17,5 | 1185 | 1090 | 1030 | 968  | 57 | 148 | 24 | 12 | 5  | 48 | 28 | M45 | 249  |
| 1000 | 1016,0 | 20,0 | 1320 | 1210 | 1140 | 1070 | 63 | 160 | 24 | 16 | 5  | 56 | 28 | M52 | 338  |

**TYP 11 PN 40**

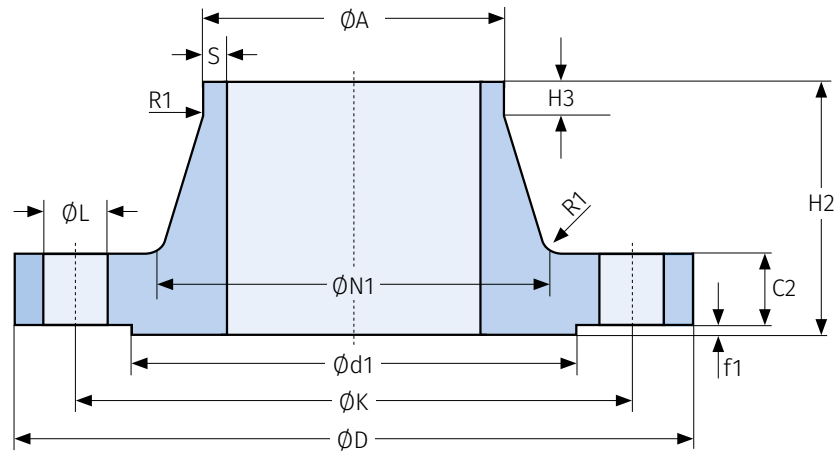
| DN  | A     | S    | D   | K   | d1  | N1  | C2 | H2  | H3 | R1 | f1 | L  | n  | M   | kg    |
|-----|-------|------|-----|-----|-----|-----|----|-----|----|----|----|----|----|-----|-------|
| 10  | 17,2  | 2,0  | 90  | 60  | 40  | 28  | 16 | 35  | 6  | 4  | 2  | 14 | 4  | M12 | 0,678 |
| 15  | 21,3  | 2,0  | 95  | 65  | 45  | 32  | 16 | 38  | 6  | 4  | 2  | 14 | 4  | M12 | 0,768 |
| 20  | 26,9  | 2,3  | 105 | 75  | 58  | 40  | 18 | 40  | 6  | 4  | 2  | 14 | 4  | M12 | 1,09  |
| 25  | 33,7  | 2,6  | 115 | 85  | 68  | 46  | 18 | 40  | 6  | 4  | 2  | 14 | 4  | M12 | 1,30  |
| 32  | 42,4  | 2,6  | 140 | 100 | 78  | 56  | 18 | 42  | 6  | 6  | 2  | 18 | 4  | M16 | 1,91  |
| 40  | 48,3  | 2,6  | 150 | 110 | 88  | 64  | 18 | 45  | 7  | 6  | 3  | 18 | 4  | M16 | 2,15  |
| 50  | 60,3  | 2,9  | 165 | 125 | 102 | 75  | 20 | 48  | 8  | 6  | 3  | 18 | 4  | M16 | 2,85  |
| 65  | 76,1  | 2,9  | 185 | 145 | 122 | 90  | 22 | 52  | 10 | 6  | 3  | 18 | 8  | M16 | 3,68  |
| 80  | 88,9  | 3,2  | 200 | 160 | 138 | 105 | 24 | 58  | 12 | 8  | 3  | 18 | 8  | M16 | 4,78  |
| 100 | 114,3 | 3,6  | 235 | 190 | 162 | 134 | 24 | 65  | 12 | 8  | 3  | 22 | 8  | M20 | 6,46  |
| 125 | 139,7 | 4,0  | 270 | 220 | 188 | 162 | 26 | 68  | 12 | 8  | 3  | 26 | 8  | M24 | 8,86  |
| 150 | 168,3 | 4,5  | 300 | 250 | 218 | 192 | 28 | 75  | 12 | 10 | 3  | 26 | 8  | M24 | 11,7  |
| 200 | 219,1 | 6,3  | 375 | 320 | 285 | 244 | 34 | 88  | 16 | 10 | 3  | 30 | 12 | M27 | 21,0  |
| 250 | 273,0 | 7,1  | 450 | 385 | 345 | 306 | 38 | 105 | 18 | 12 | 3  | 33 | 12 | M30 | 34,2  |
| 300 | 323,9 | 8,0  | 515 | 450 | 410 | 362 | 42 | 115 | 18 | 12 | 4  | 33 | 16 | M30 | 47,6  |
| 350 | 355,6 | 8,8  | 580 | 510 | 465 | 408 | 46 | 125 | 20 | 12 | 4  | 36 | 16 | M33 | 69,3  |
| 400 | 406,4 | 11,0 | 660 | 585 | 535 | 462 | 50 | 135 | 20 | 12 | 4  | 39 | 16 | M36 | 98    |
| 450 | 457,0 | 12,5 | 685 | 610 | 560 | 500 | 57 | 135 | 20 | 12 | 4  | 39 | 20 | M36 | 105   |
| 500 | 508,0 | 14,2 | 755 | 670 | 615 | 562 | 57 | 140 | 20 | 12 | 4  | 42 | 20 | M39 | 130   |
| 600 | 610,0 | 16,0 | 890 | 795 | 735 | 666 | 72 | 150 | 20 | 12 | 5  | 48 | 20 | M45 | 209   |

 Maße / dimensions in mm  
 n = Anzahl Schraubenlöcher / number of bolts holes  
 M = Schraubengröße / size of bolts

WELD-NECK FLANGE

# VORSCHWEISSFLANSCH TYP 11 PN 63 / PN 100

nach EN 1092-1



## TYP 11 PN 63

Maße für DN < 50 siehe PN 100 / Dimensions for DN < 50 see PN 100

| DN  | A     | S    | D   | K   | d1  | N1  | C2 | H2  | H3 | R1 | f1 | L  | n  | M   | kg   |
|-----|-------|------|-----|-----|-----|-----|----|-----|----|----|----|----|----|-----|------|
| 50  | 60,3  | 2,9  | 180 | 135 | 102 | 82  | 26 | 62  | 10 | 6  | 3  | 22 | 4  | M20 | 4,51 |
| 65  | 76,1  | 3,2  | 205 | 160 | 122 | 98  | 26 | 68  | 12 | 6  | 3  | 22 | 8  | M20 | 5,58 |
| 80  | 88,9  | 3,6  | 215 | 170 | 138 | 112 | 28 | 72  | 12 | 8  | 3  | 22 | 8  | M20 | 6,68 |
| 100 | 114,3 | 4,0  | 250 | 200 | 162 | 138 | 30 | 78  | 12 | 8  | 3  | 26 | 8  | M24 | 9,27 |
| 125 | 139,7 | 4,5  | 295 | 240 | 188 | 168 | 34 | 88  | 12 | 8  | 3  | 30 | 8  | M27 | 14,5 |
| 150 | 168,3 | 5,6  | 345 | 280 | 218 | 202 | 36 | 95  | 12 | 10 | 3  | 33 | 8  | M30 | 21,4 |
| 200 | 219,1 | 7,1  | 415 | 345 | 285 | 256 | 42 | 110 | 16 | 10 | 3  | 36 | 12 | M33 | 34,1 |
| 250 | 273,0 | 8,8  | 470 | 400 | 345 | 316 | 46 | 125 | 18 | 12 | 3  | 36 | 12 | M33 | 48,3 |
| 300 | 323,9 | 11,0 | 530 | 460 | 410 | 372 | 52 | 140 | 18 | 12 | 4  | 36 | 16 | M33 | 67,5 |
| 350 | 355,6 | 12,5 | 600 | 525 | 465 | 420 | 56 | 150 | 20 | 12 | 4  | 39 | 16 | M36 | 97,8 |
| 400 | 406,4 | 14,2 | 670 | 585 | 535 | 475 | 60 | 160 | 20 | 12 | 4  | 42 | 16 | M39 | 129  |

## TYP 11 PN 100

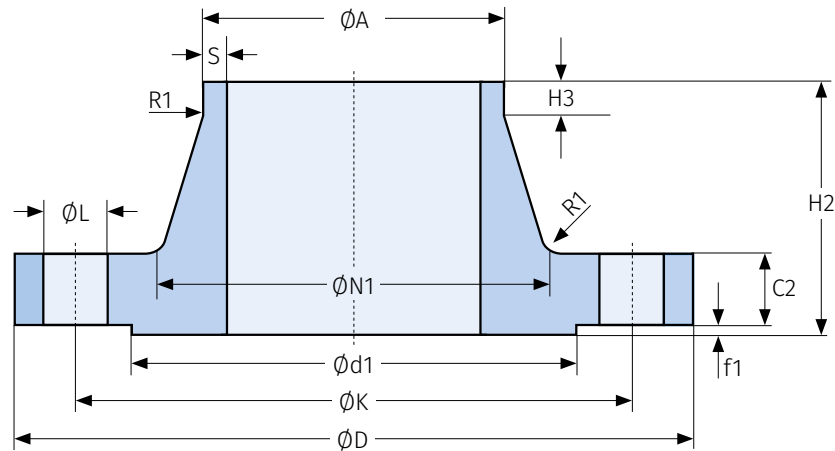
| DN  | A     | S    | D   | K   | d1  | N1  | C2 | H2  | H3 | R1 | f1 | L  | n  | M   | kg   |
|-----|-------|------|-----|-----|-----|-----|----|-----|----|----|----|----|----|-----|------|
| 10  | 17,2  | 2,0  | 100 | 70  | 40  | 32  | 20 | 45  | 6  | 4  | 2  | 14 | 4  | M12 | 1,09 |
| 15  | 21,3  | 2,0  | 105 | 75  | 45  | 34  | 20 | 45  | 6  | 4  | 2  | 14 | 4  | M12 | 1,20 |
| 20  | 26,9  | 2,6  | 130 | 90  | 58  | 42  | 22 | 48  | 8  | 4  | 2  | 18 | 4  | M16 | 2,02 |
| 25  | 33,7  | 2,6  | 140 | 100 | 68  | 52  | 24 | 58  | 8  | 4  | 2  | 18 | 4  | M16 | 2,63 |
| 32  | 42,4  | 2,9  | 155 | 110 | 78  | 62  | 24 | 60  | 8  | 6  | 2  | 22 | 4  | M20 | 3,20 |
| 40  | 48,3  | 2,9  | 170 | 125 | 88  | 70  | 26 | 62  | 10 | 6  | 3  | 22 | 4  | M20 | 4,07 |
| 50  | 60,3  | 3,2  | 195 | 145 | 102 | 90  | 28 | 68  | 10 | 6  | 3  | 26 | 4  | M24 | 5,82 |
| 65  | 76,1  | 3,6  | 220 | 170 | 122 | 108 | 30 | 76  | 12 | 6  | 3  | 26 | 8  | M24 | 7,57 |
| 80  | 88,9  | 4,0  | 230 | 180 | 138 | 120 | 32 | 78  | 12 | 8  | 3  | 26 | 8  | M24 | 8,82 |
| 100 | 114,3 | 5,0  | 265 | 210 | 162 | 150 | 36 | 90  | 12 | 8  | 3  | 30 | 8  | M27 | 13,1 |
| 125 | 139,7 | 6,3  | 315 | 250 | 188 | 180 | 40 | 105 | 12 | 8  | 3  | 33 | 8  | M30 | 21,0 |
| 150 | 168,3 | 7,1  | 355 | 290 | 218 | 210 | 44 | 115 | 12 | 10 | 3  | 33 | 12 | M30 | 28,3 |
| 200 | 219,1 | 10,0 | 430 | 360 | 285 | 278 | 52 | 130 | 16 | 10 | 3  | 36 | 12 | M33 | 50,2 |
| 250 | 273,0 | 12,5 | 505 | 430 | 345 | 340 | 60 | 157 | 18 | 12 | 3  | 39 | 12 | M36 | 81,4 |
| 300 | 323,9 | 14,2 | 585 | 500 | 410 | 400 | 68 | 170 | 18 | 12 | 4  | 42 | 16 | M39 | 118  |
| 350 | 355,6 | 16,0 | 655 | 560 | 465 | 460 | 74 | 189 | 20 | 12 | 4  | 48 | 16 | M45 | 169  |

TYP 11 PN 63 / PN 100

## WELD-NECK FLANGE

**VORSCHWEISSFLANSCH  
 TYP 11 PN 160 / PN 250**

nach EN 1092-1


**TYP 11 PN 160**

| DN  | A     | S    | D   | K   | d1  | N1  | C2 | H2  | H3 | R1 | f1 | L  | n  | M   | kg   |
|-----|-------|------|-----|-----|-----|-----|----|-----|----|----|----|----|----|-----|------|
| 10  | 17,2  | 2,0  | 100 | 70  | 40  | 32  | 20 | 45  | 6  | 4  | 2  | 14 | 4  | M12 | 1,10 |
| 15  | 21,3  | 2,0  | 105 | 75  | 45  | 34  | 20 | 45  | 6  | 4  | 2  | 14 | 4  | M12 | 1,20 |
| 25  | 33,7  | 2,9  | 140 | 100 | 68  | 52  | 24 | 58  | 8  | 4  | 2  | 18 | 4  | M16 | 2,64 |
| 40  | 48,3  | 3,6  | 170 | 125 | 88  | 70  | 28 | 64  | 10 | 6  | 3  | 22 | 4  | M20 | 4,42 |
| 50  | 60,3  | 4,0  | 195 | 145 | 102 | 90  | 30 | 75  | 10 | 6  | 3  | 26 | 4  | M24 | 6,38 |
| 65  | 76,1  | 5,0  | 220 | 170 | 122 | 108 | 34 | 82  | 12 | 6  | 3  | 26 | 8  | M24 | 8,75 |
| 80  | 88,9  | 6,3  | 230 | 180 | 138 | 120 | 36 | 86  | 12 | 8  | 3  | 26 | 8  | M24 | 10,3 |
| 100 | 114,3 | 8,0  | 265 | 210 | 162 | 150 | 40 | 100 | 12 | 8  | 3  | 30 | 8  | M27 | 15,3 |
| 125 | 139,7 | 10,0 | 315 | 250 | 188 | 180 | 44 | 115 | 14 | 8  | 3  | 33 | 8  | M30 | 24,4 |
| 150 | 168,3 | 12,5 | 355 | 290 | 218 | 210 | 50 | 128 | 14 | 10 | 3  | 33 | 12 | M30 | 34,4 |
| 200 | 219,1 | 16,0 | 430 | 360 | 285 | 278 | 60 | 140 | 16 | 10 | 3  | 36 | 12 | M33 | 60,7 |
| 250 | 273,0 | 20,0 | 515 | 430 | 345 | 340 | 68 | 155 | 18 | 12 | 3  | 42 | 12 | M39 | 97,6 |
| 300 | 323,9 | 22,2 | 585 | 500 | 410 | 400 | 78 | 175 | 18 | 12 | 4  | 42 | 16 | M39 | 140  |

**TYP 11 PN 250**

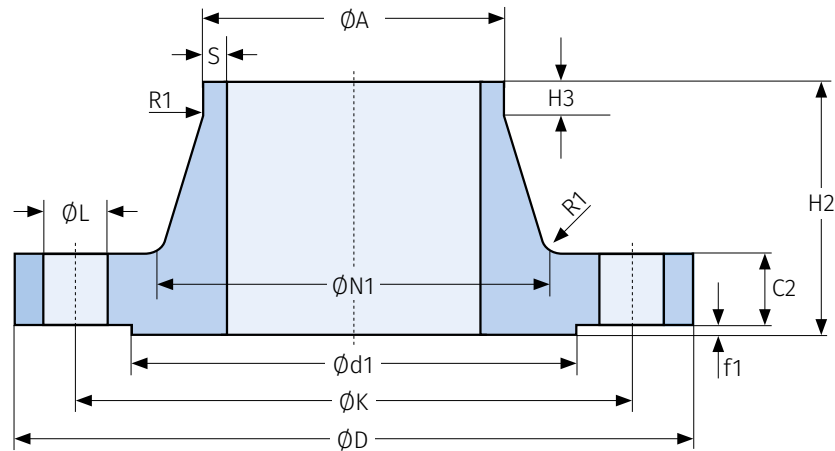
Maße für DN 10 siehe PN 320 / Dimensions for DN 10 see PN 320

| DN  | A     | S    | D   | K   | d1  | N1  | C2  | H2  | H3 | R1 | f1 | L  | n  | M   | kg   |
|-----|-------|------|-----|-----|-----|-----|-----|-----|----|----|----|----|----|-----|------|
| 15  | 21,3  | 2,6  | 130 | 90  | 45  | 48  | 26  | 60  | 6  | 4  | 2  | 18 | 4  | M16 | 2,51 |
| 25  | 33,7  | 3,6  | 150 | 105 | 68  | 60  | 28  | 65  | 8  | 4  | 2  | 22 | 4  | M20 | 3,58 |
| 40  | 48,3  | 5,0  | 185 | 135 | 88  | 84  | 34  | 80  | 10 | 6  | 3  | 26 | 4  | M24 | 6,72 |
| 50  | 60,3  | 6,3  | 200 | 150 | 102 | 95  | 38  | 85  | 10 | 6  | 3  | 26 | 8  | M24 | 8,22 |
| 65  | 76,1  | 8,0  | 230 | 180 | 122 | 124 | 42  | 95  | 12 | 6  | 3  | 26 | 8  | M24 | 12,8 |
| 80  | 101,6 | 11,0 | 255 | 200 | 138 | 136 | 46  | 102 | 12 | 8  | 3  | 30 | 8  | M27 | 16,5 |
| 100 | 127,0 | 14,2 | 300 | 235 | 162 | 164 | 54  | 120 | 14 | 8  | 3  | 33 | 8  | M30 | 27,2 |
| 125 | 152,4 | 16,0 | 340 | 275 | 188 | 200 | 60  | 140 | 16 | 8  | 3  | 33 | 12 | M30 | 39,0 |
| 150 | 177,8 | 17,5 | 390 | 320 | 218 | 240 | 68  | 160 | 18 | 10 | 3  | 36 | 12 | M33 | 59,6 |
| 200 | 244,5 | 25,0 | 485 | 400 | 285 | 305 | 82  | 190 | 25 | 10 | 3  | 42 | 12 | M39 | 110  |
| 250 | 298,5 | 32,0 | 585 | 490 | 345 | 385 | 100 | 215 | 30 | 12 | 3  | 48 | 16 | M45 | 190  |

## WELD-NECK FLANGE

**VORSCHWEISSFLANSCH  
 TYP 11 PN 320 / PN 400**

nach EN 1092-1


**TYP 11 PN 320**

| DN  | A     | S    | D   | K   | d1  | N1  | C2  | H2  | H3 | R1 | f1 | L  | n  | M   | kg   |
|-----|-------|------|-----|-----|-----|-----|-----|-----|----|----|----|----|----|-----|------|
| 10  | 17,2  | 2,6  | 125 | 85  | 40  | 44  | 24  | 58  | 6  | 4  | 2  | 18 | 4  | M16 | 2,14 |
| 15  | 21,3  | 3,2  | 130 | 90  | 45  | 48  | 26  | 60  | 6  | 4  | 2  | 18 | 4  | M16 | 2,53 |
| 25  | 33,7  | 5,0  | 160 | 115 | 68  | 68  | 34  | 78  | 8  | 4  | 2  | 22 | 4  | M20 | 5,18 |
| 40  | 48,3  | 6,3  | 195 | 145 | 88  | 92  | 38  | 88  | 10 | 6  | 3  | 26 | 4  | M24 | 8,65 |
| 50  | 63,5  | 8,0  | 210 | 160 | 102 | 106 | 42  | 100 | 10 | 6  | 3  | 26 | 8  | M24 | 10,7 |
| 65  | 88,9  | 11,0 | 255 | 200 | 122 | 138 | 51  | 120 | 12 | 6  | 3  | 30 | 8  | M27 | 19,5 |
| 80  | 101,6 | 12,5 | 275 | 220 | 138 | 156 | 55  | 130 | 14 | 8  | 3  | 30 | 8  | M27 | 25,2 |
| 100 | 133,0 | 16,0 | 335 | 265 | 162 | 186 | 65  | 145 | 16 | 8  | 3  | 36 | 8  | M33 | 42,5 |
| 125 | 168,3 | 20,0 | 380 | 310 | 188 | 230 | 75  | 175 | 20 | 8  | 3  | 36 | 12 | M33 | 63,6 |
| 150 | 193,7 | 25,0 | 425 | 350 | 218 | 265 | 84  | 195 | 25 | 10 | 3  | 39 | 12 | M36 | 91,5 |
| 200 | 244,5 | 30,0 | 525 | 440 | 285 | 345 | 103 | 235 | 30 | 10 | 3  | 42 | 16 | M39 | 172  |
| 250 | 323,9 | 40,0 | 640 | 540 | 345 | 428 | 125 | 300 | 40 | 12 | 3  | 52 | 16 | M48 | 312  |

**TYP 11 PN 400**

| DN  | A     | S    | D   | K   | d1  | N1  | C2  | H2  | H3 | R1 | f1 | L  | n  | M   | kg   |
|-----|-------|------|-----|-----|-----|-----|-----|-----|----|----|----|----|----|-----|------|
| 10  | 17,2  | 3,6  | 125 | 85  | 40  | 48  | 28  | 65  | 8  | 4  | 2  | 18 | 4  | M16 | 2,55 |
| 15  | 26,9  | 5,0  | 145 | 100 | 45  | 56  | 30  | 68  | 8  | 4  | 2  | 22 | 4  | M20 | 3,62 |
| 25  | 42,4  | 7,1  | 180 | 130 | 68  | 82  | 38  | 90  | 10 | 4  | 2  | 26 | 4  | M24 | 7,45 |
| 40  | 60,3  | 10,0 | 220 | 165 | 88  | 106 | 48  | 110 | 12 | 6  | 3  | 30 | 4  | M27 | 14,1 |
| 50  | 76,1  | 12,5 | 235 | 180 | 102 | 120 | 52  | 120 | 15 | 6  | 3  | 30 | 8  | M27 | 16,7 |
| 65  | 101,6 | 16,0 | 290 | 225 | 122 | 158 | 64  | 135 | 18 | 6  | 3  | 33 | 8  | M30 | 31,6 |
| 80  | 114,3 | 17,5 | 305 | 240 | 138 | 174 | 68  | 150 | 20 | 8  | 3  | 33 | 8  | M30 | 38,4 |
| 100 | 139,7 | 22,2 | 370 | 295 | 162 | 216 | 80  | 175 | 25 | 8  | 3  | 39 | 8  | M36 | 67,3 |
| 125 | 193,7 | 30,0 | 415 | 340 | 188 | 258 | 92  | 200 | 30 | 8  | 3  | 39 | 12 | M36 | 94,5 |
| 150 | 219,1 | 35,0 | 475 | 390 | 218 | 302 | 105 | 225 | 35 | 10 | 3  | 42 | 12 | M39 | 145  |
| 200 | 273,0 | 40,0 | 585 | 490 | 285 | 388 | 130 | 280 | 40 | 10 | 3  | 48 | 16 | M45 | 270  |